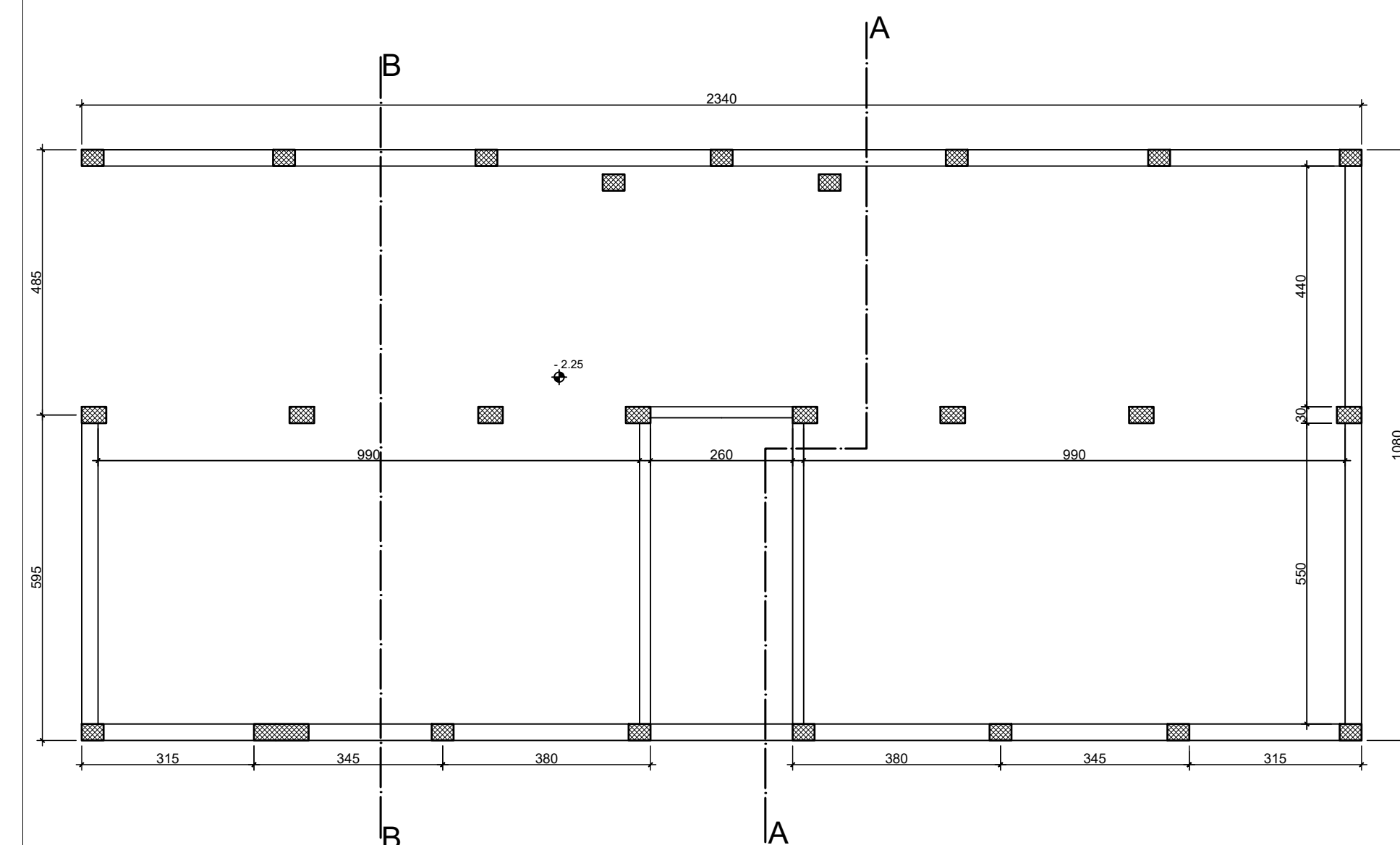
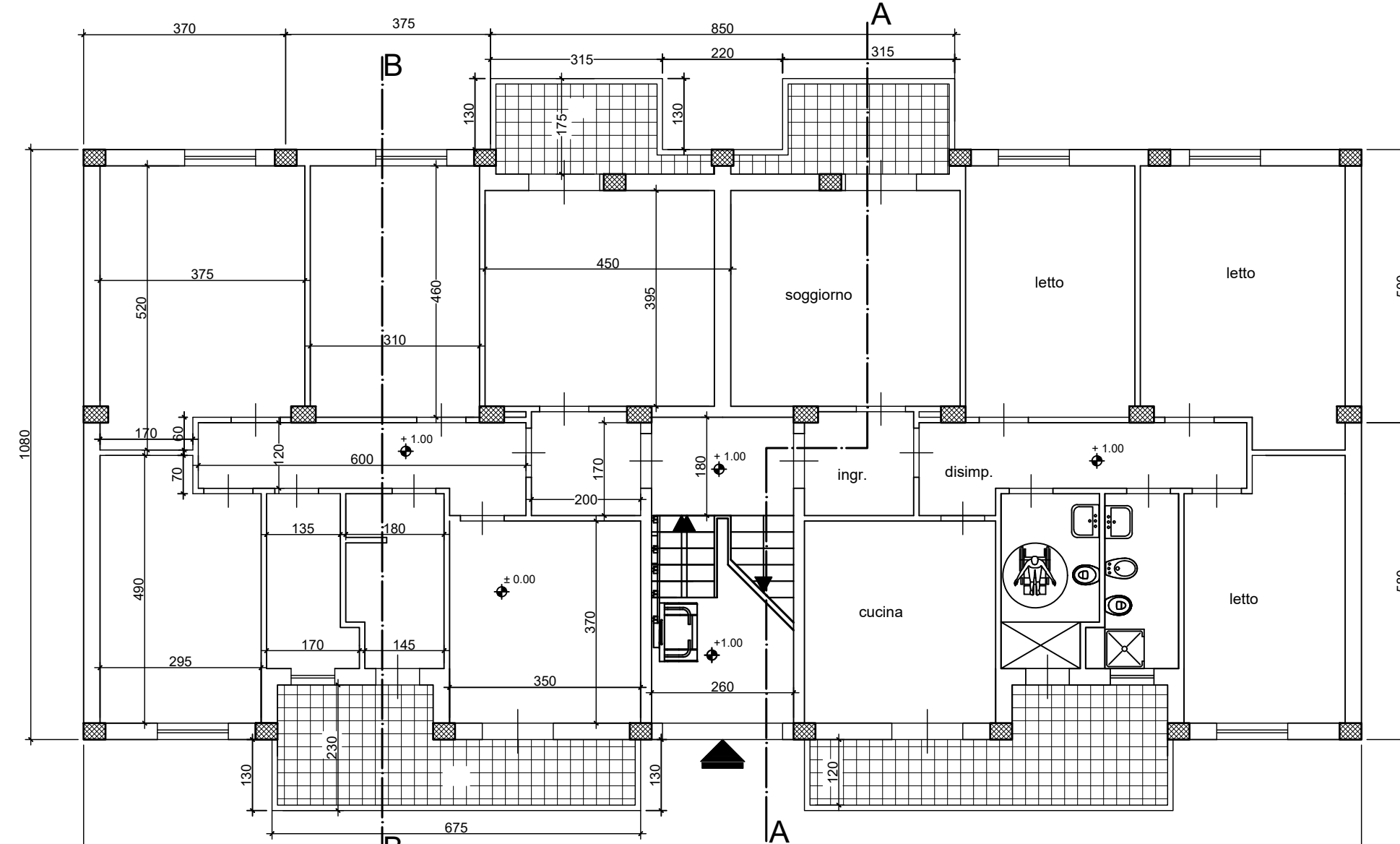


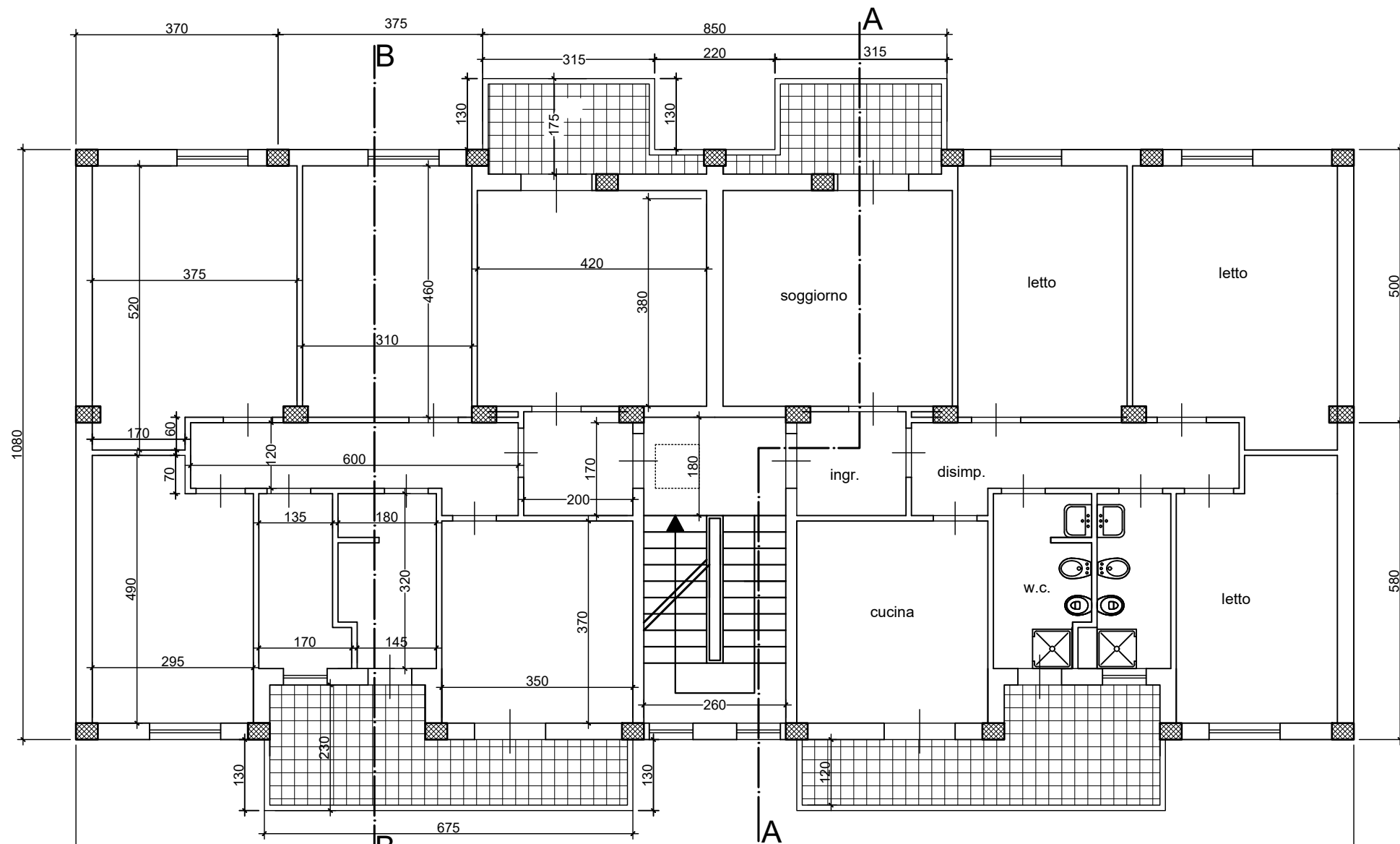
Palazzina A 6VL



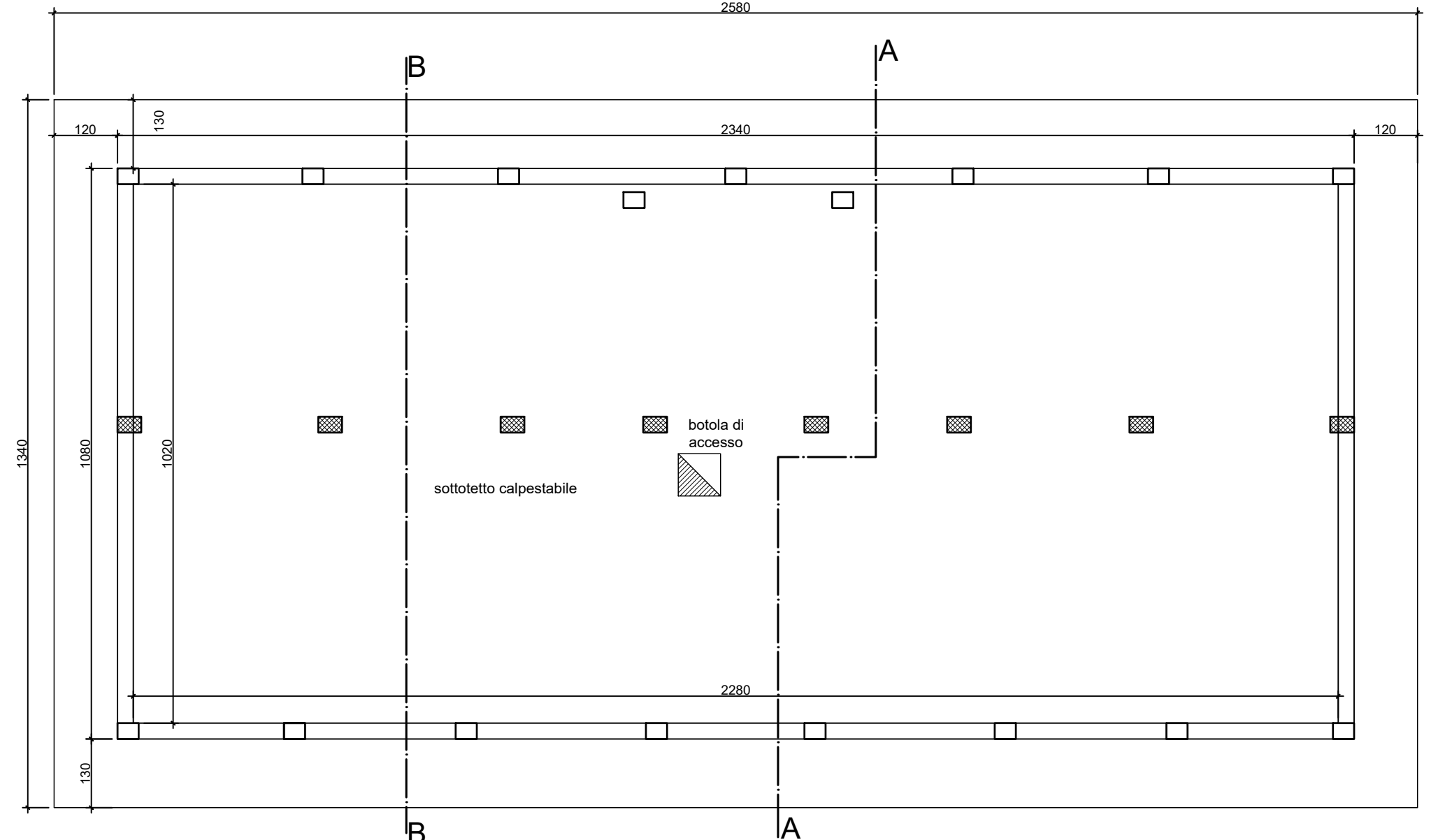
PIANTA PIANO SEMINTERRATO - PALAZZINA A-6VL  
scala 1:100



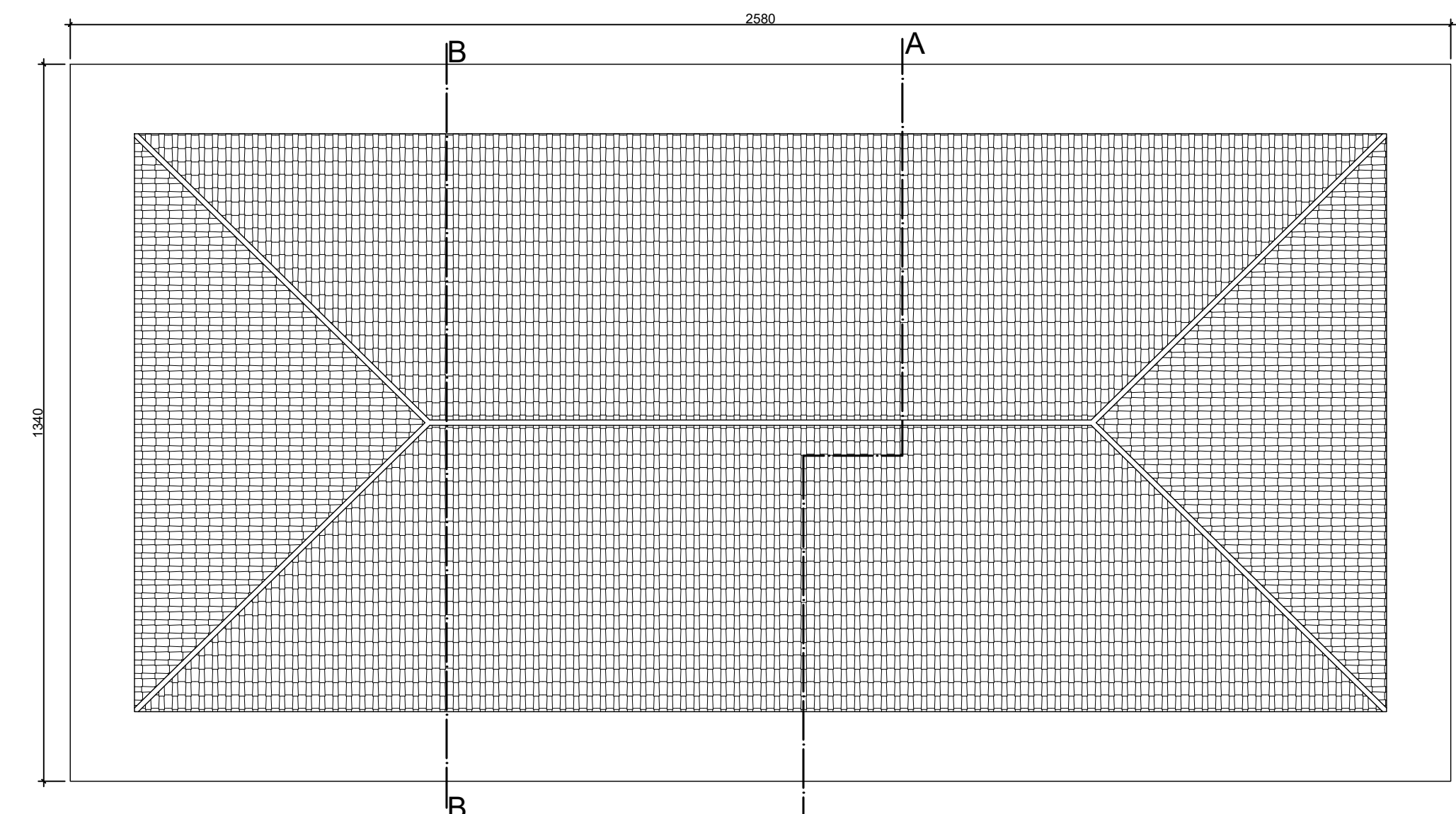
PIANTA PIANO RIALZATO - PALAZZINA A-6VL  
scala 1:100



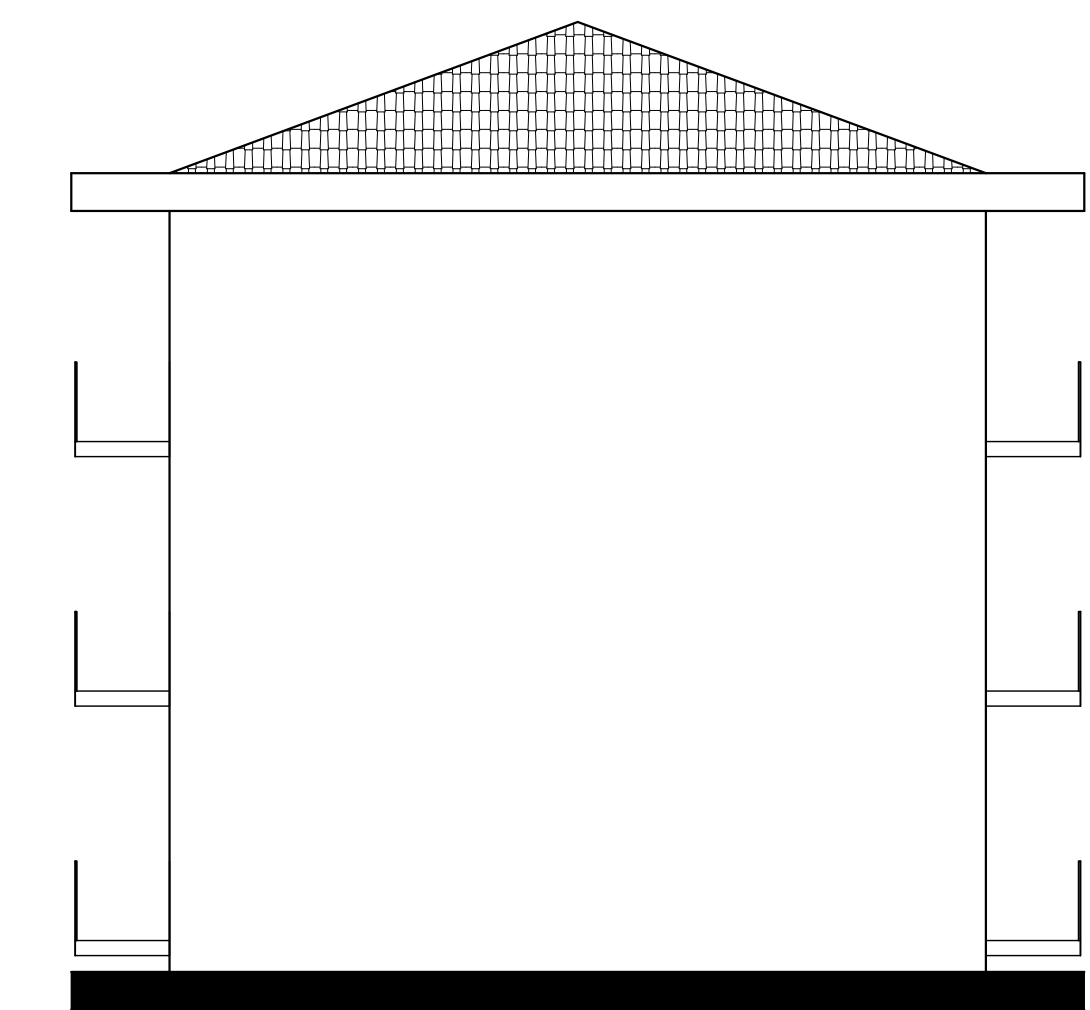
PIANTA PIANI PRIMO E SECONDO - PALAZZINA A-6VL  
scala 1:100



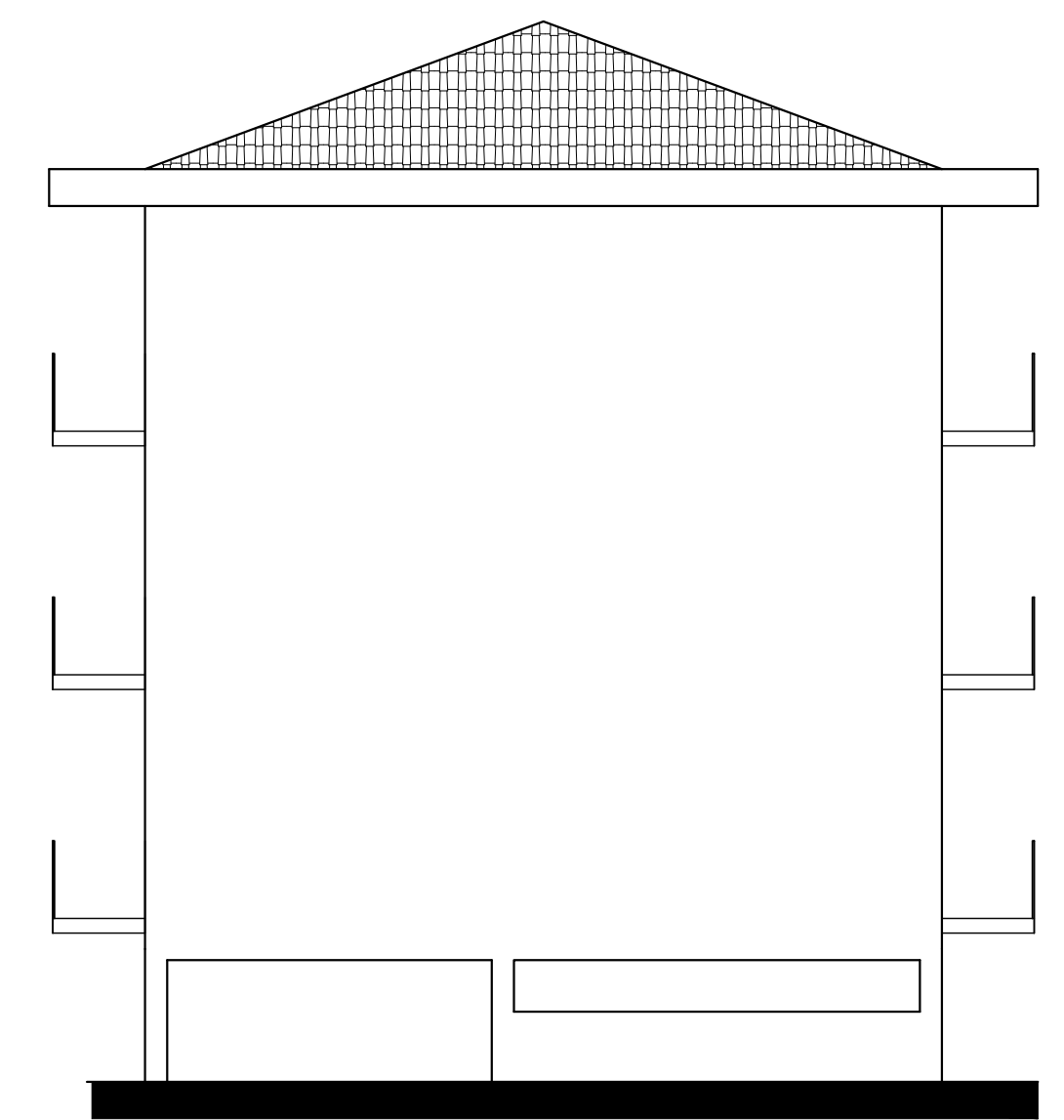
PIANTA SOTTOTETTO - PALAZZINA A-6VL  
scala 1:100



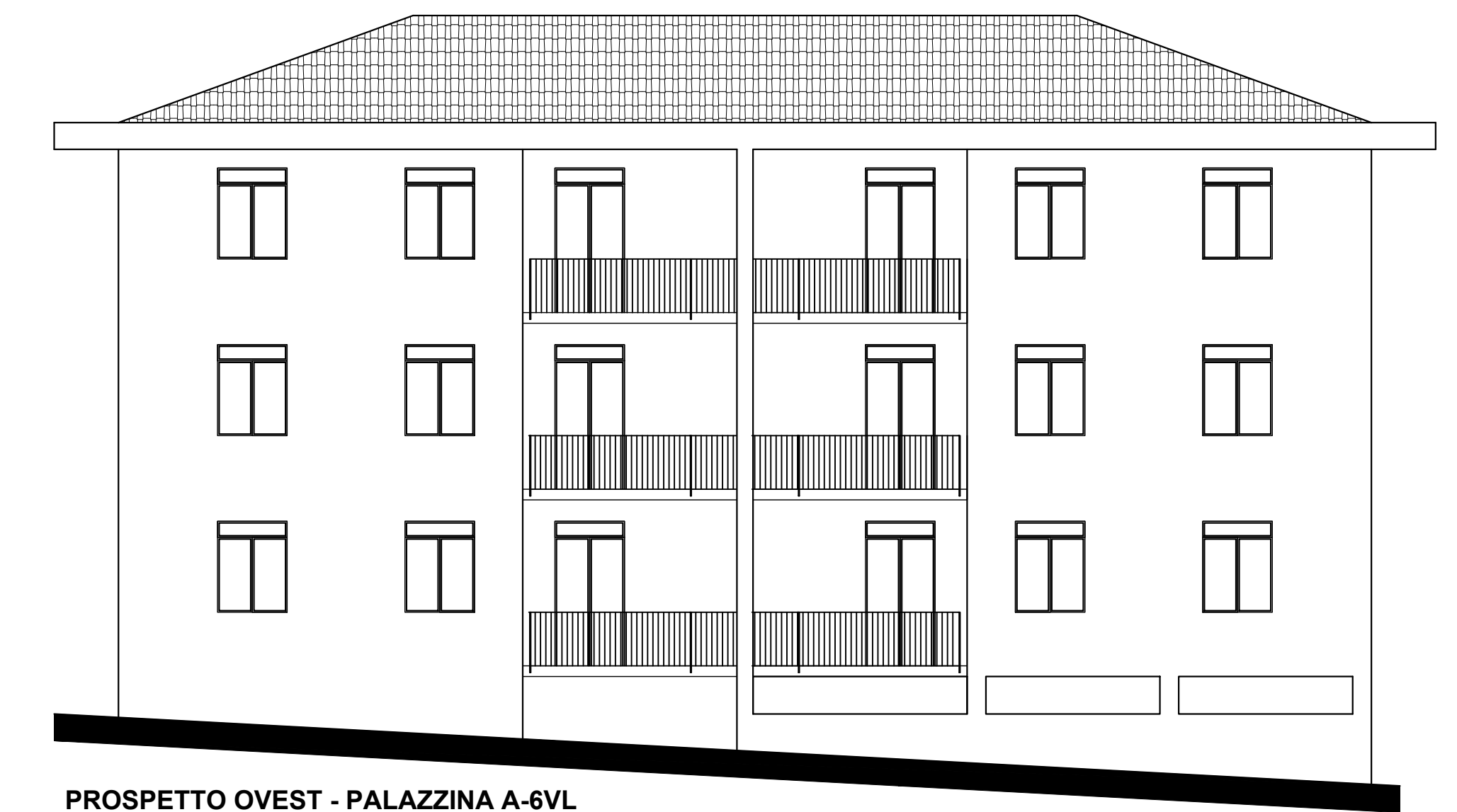
PIANTA COPERTURA - PALAZZINA A-6VL  
scala 1:100



PROSPETTO NORD - - PALAZZINA A-6VL  
scala 1:100



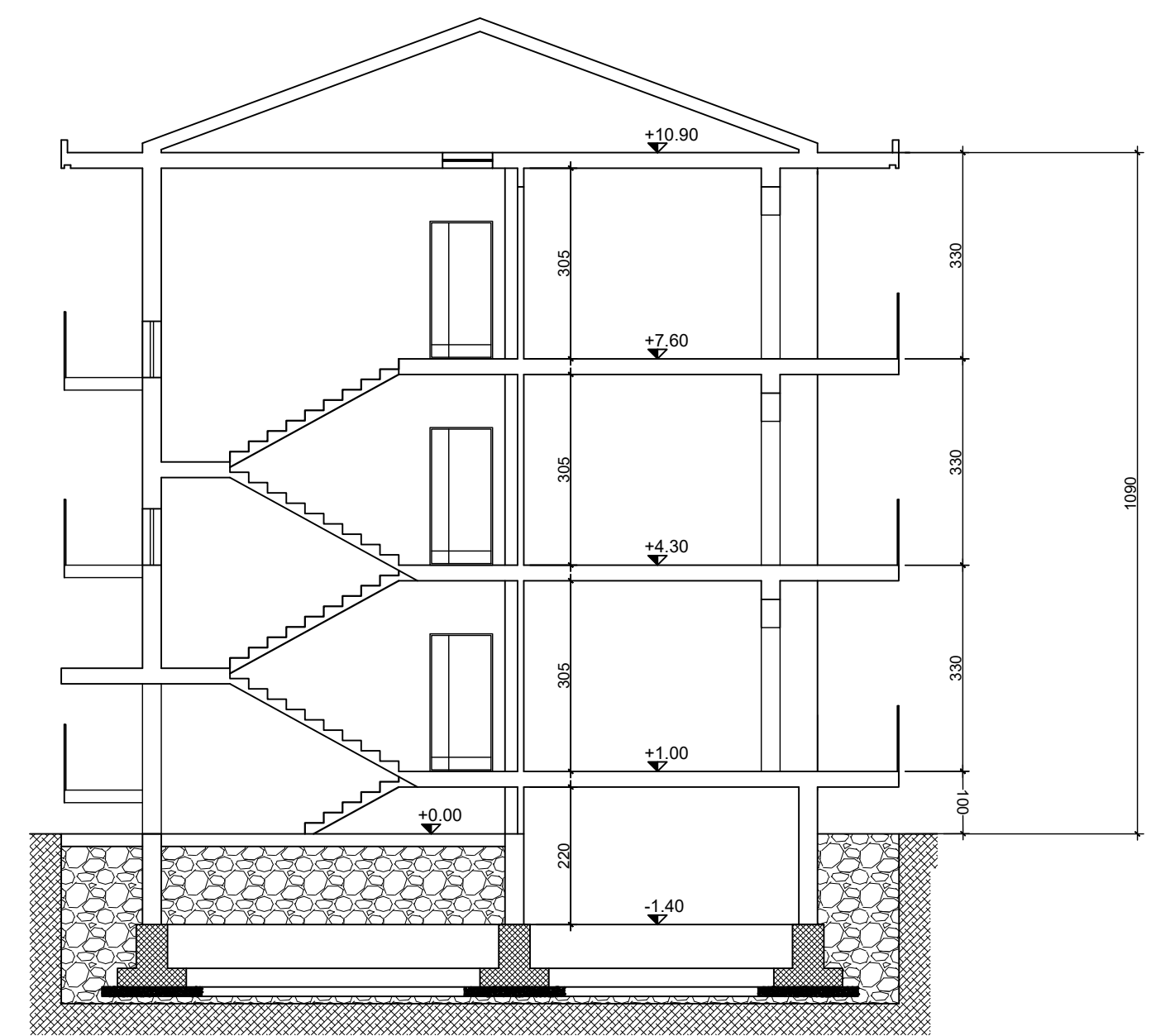
PROSPETTO SUD - PALAZZINA A-6VL  
scala 1:100



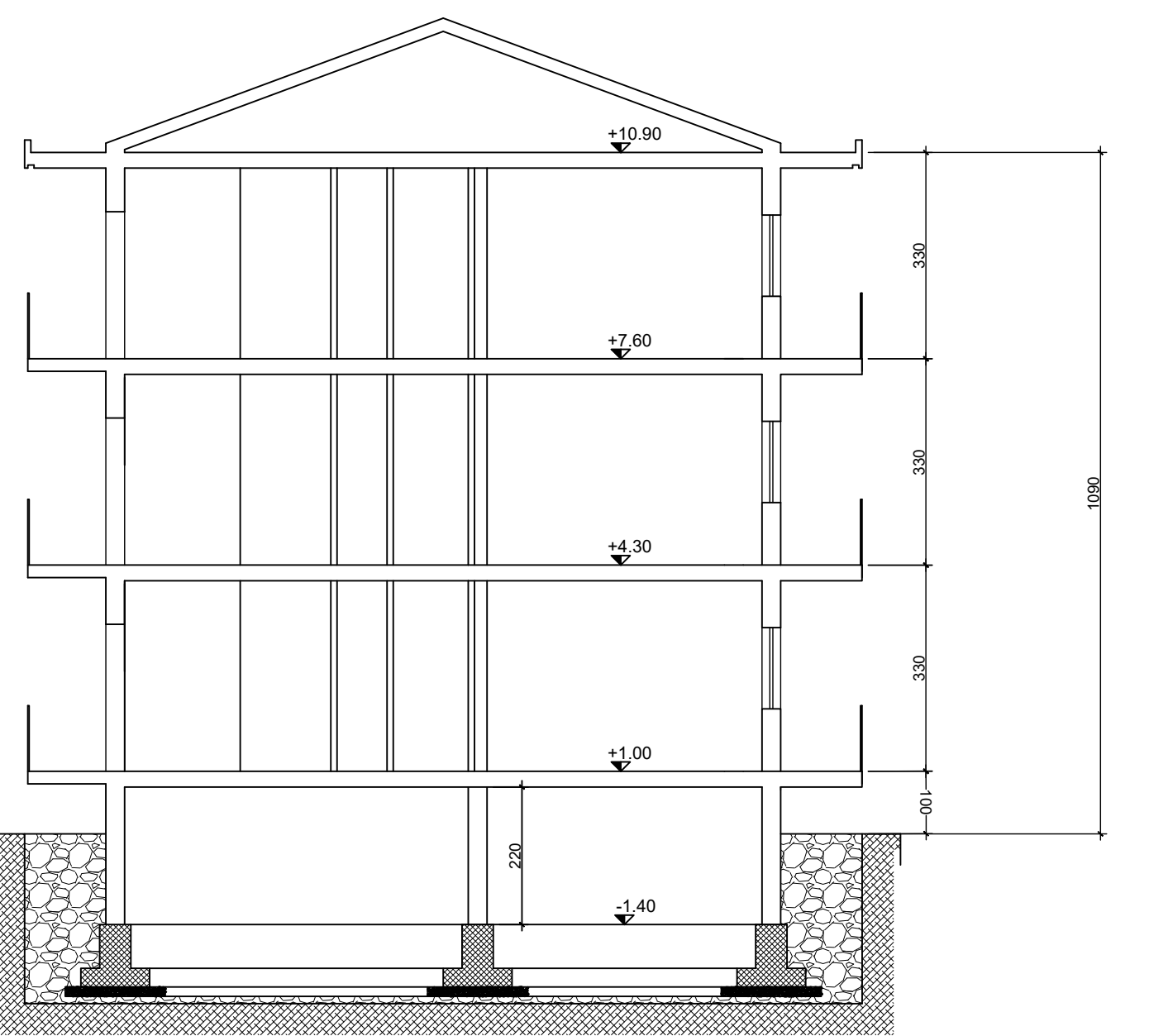
PROSPETTO OVEST - PALAZZINA A-6VL  
scala 1:100



PROSPETTO EST - PALAZZINA A-6VL  
scala 1:100



SEZIONE A-A - PALAZZINA A-6VL  
scala 1:100

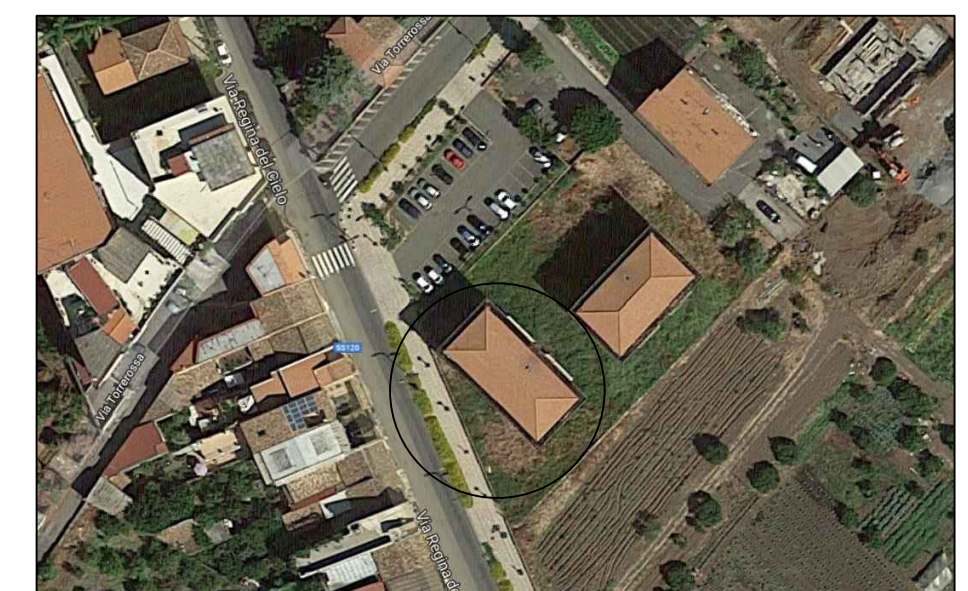


SEZIONE B-B - PALAZZINA A-6VL  
scala 1:100



Istituto Autonomo Case Popolari

LAVORI DI RECUPERO DELLA PALAZZINA "A" DEL  
PLESSO POPOLARE SITO IN VIA REGINA DEL CIELO  
IN FIUMEFREDDO DI SICILIA (CT) - Prog. 1815



Progetto Esecutivo

PIANTE PROSPETTI E SEZIONI - PAL. A			Allegato 4
IL PROGETTISTA DOTT. ING. VALERIA VADALA'		IL R.U.P. DOTT. ARCH. IDA MARIA BARATTA	
Revisione	Descrizione	Data	
		Settembre 2018	